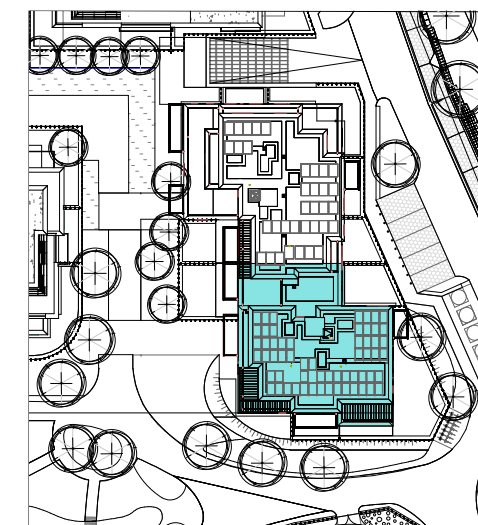
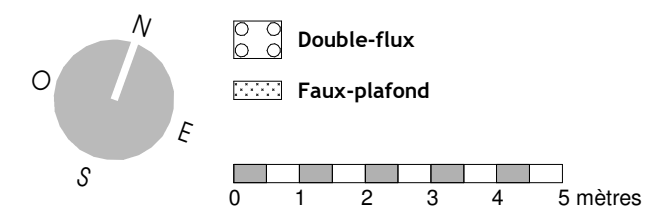


| Unité | Nbre CH. | Surface (+/-m2) |
|----------|----------|----------------------|
| ENH22B11 | 1CH | 55.47 m ² |
| | Balcon | 7.60 m ² |
| ENH22B12 | 2CH. | 92.75 m ² |
| | Balcon | 11.30 m ² |
| ENH22B13 | 2CH. | 89.81 m ² |
| | Terrasse | 9.40 m ² |
| ENH22B14 | 2CH. | 86.95 m ² |
| | Balcon | 9.60 m ² |

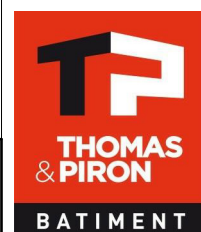


LEGENDE



Stade COM
06/07/23
Transmis

MAITRE DE L'OUVRAGE :
Thomas & Piron Bâtiment s.a.
5, Rue Fort d'Andoy - 5100 Wierde



Jambes - Parc d'Enhaive
BAT 2

INDICE

ECHELLE
1/115

FEUILLE
7 / 18

Bloc B - R+1

PLAN N°
ENH-2-AR-COM-110-B